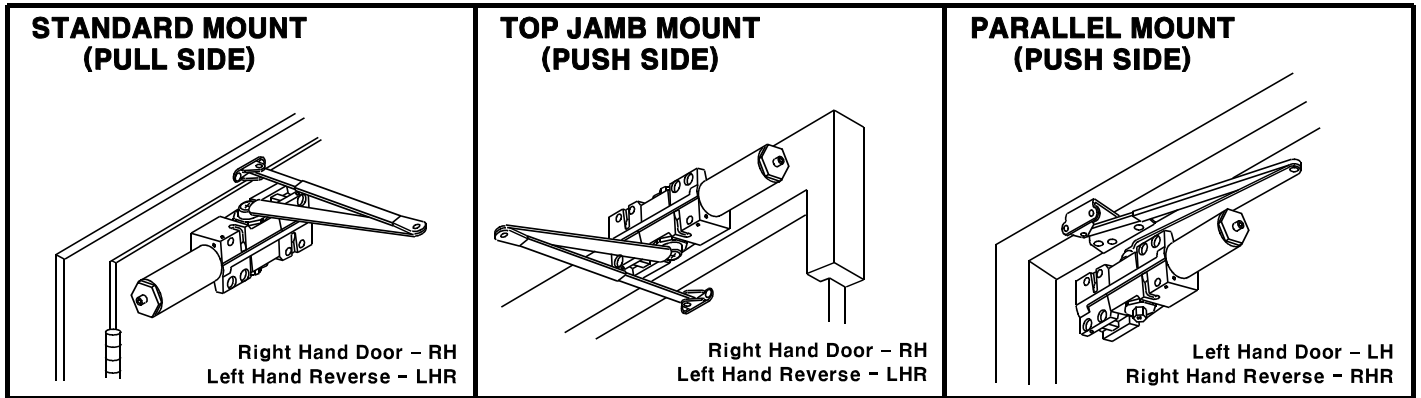


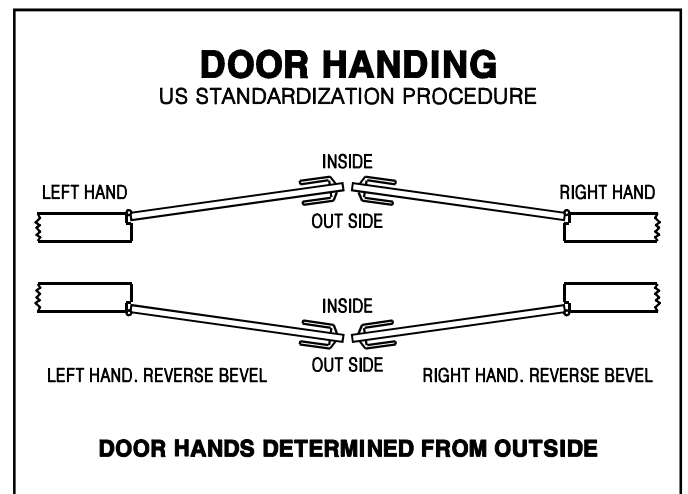
INSTALLATION INSTRUCTIONS

NK5051 series

Optional: Delayed Action



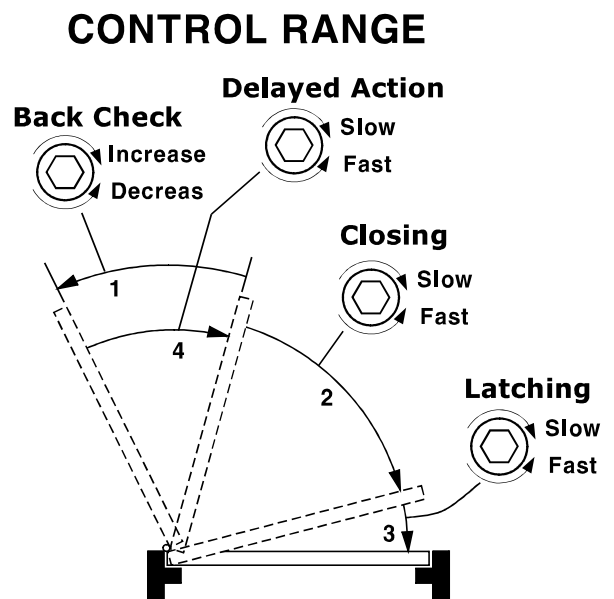
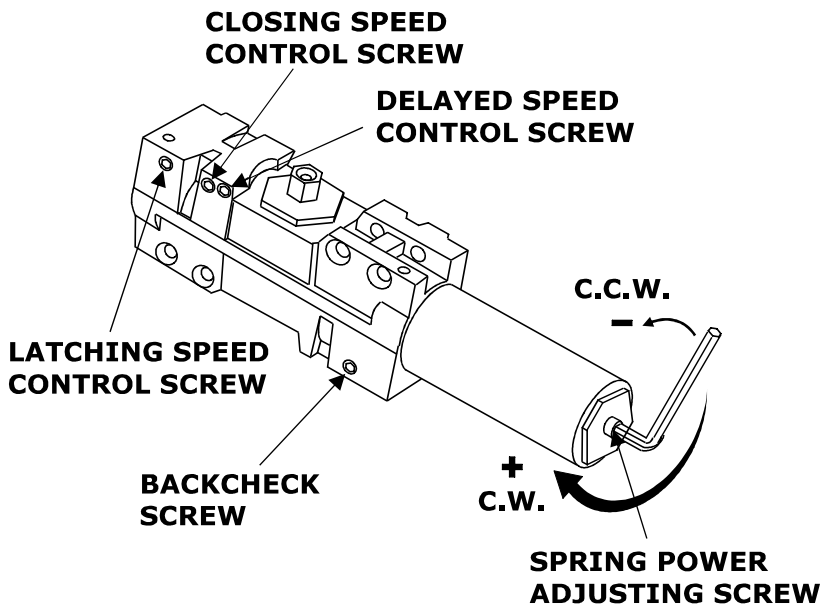
DOOR CLOSER SIZE	FULL TURNS OF POWER ADJUSTING SCREW		APPLICABLE DOOR LEAF WIDTH	
	5051 5051DA	5051BF 5051BF.DA	INTERIOR	EXTERIOR (SWING OUT)
BF	-	- 14	5 lb-f	-
1	- 7	- 12	32" (0.81m)	28" (0.71m)
2	- 4	- 8	36" (0.91m)	32" (0.81m)
3	0 (PRESET)	0 (PRESET)	42" (1.07m)	36" (0.91m)
4	+ 5	+ 4	48" (1.22m)	42" (1.07m)
5	+ 10	-	54" (1.37m)	48" (1.22m)
6	+ 15	-	58" (1.47m)	54" (1.37m)



C.W. = CLOCKWISE
C.C.W = COUNTER CLOCKWISE

PLEASE NOTE
TURNS REQUIRED ARE APPROXIMATE
BECAUSE OF VARIOUS DOOR CONDITIONS
AND LOCATIONS. YOU MAY HAVE TO
FURTHER ADJUST SPRING TENSION TO
SUIT YOUR REQUIREMENTS

IT IS IMPORTANT TO CAREFULLY FOLLOW ALL INSTALLATION AND MOUNTING INSTRUCTIONS WHEN INSTALLING ANY DOOR CLOSER.

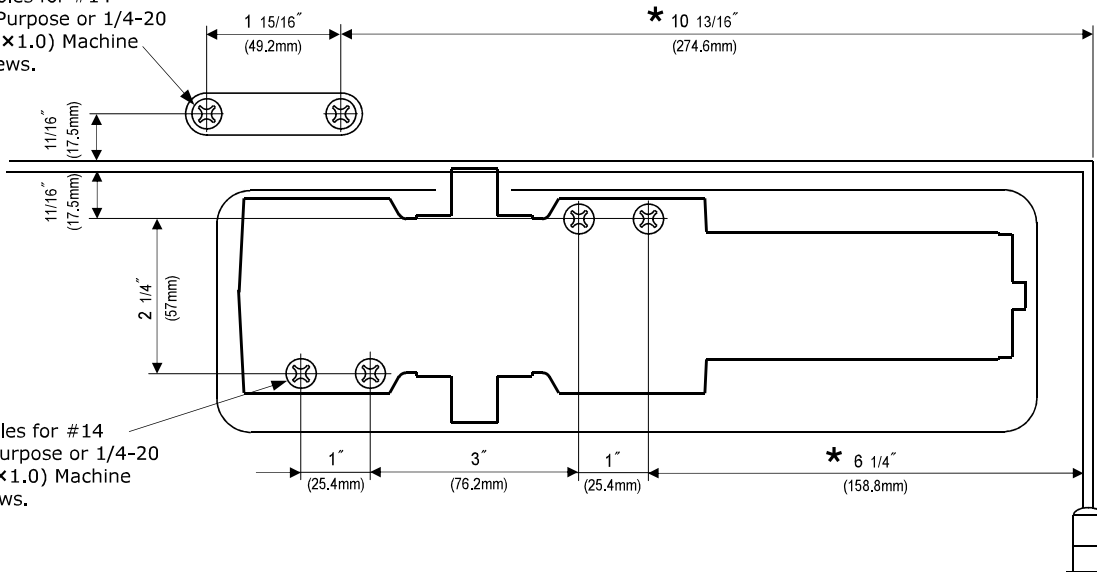


STANDARD INSTALLATION CLOSER MOUNTED ON DOOR ON PULL SIDE

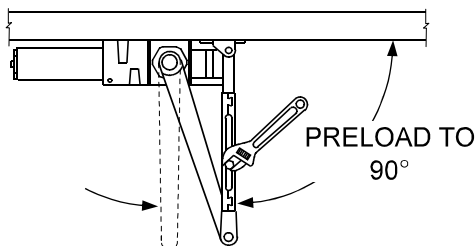
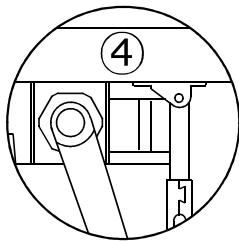
DOOR OPENING: 120°

This drawing shown LEFT HAND DOOR. For RIGHT HAND DOOR should be install in symmetry.

2 Holes for #14
All-Purpose or 1/4-20
(M6×1.0) Machine
Screws.



4 Holes for #14
All-Purpose or 1/4-20
(M6×1.0) Machine
Screws.



1. Adjust spring power to match door width as indicated by chart on page1.
2. Mount closer on door as dimensions shown. Tube end toward hinge. If pivots are used, locate closer and shoe from CENTERLINE OF PIVOT. (For offset pivots, pls increase the marked dimensions by 1/8")
3. Place main arm on top of shaft, 100° to closer body, insert arm screw into top of shaft and tighten.
4. Attach shoe to frame as shown. (If more latching power is required, shoe 180°)
5. Open door and insert rod in forearm.
6. With forearm at left angle to door (90°), insert forearm set screw and tighten. (IF HOLD OPEN ARM IS USED, THE NUT IS ON THE TOP FOR RH DOOR AND BOTTOM FOR LH DOOR)

REGULATION:

A 'Normal' closing time from 90° open position to door stop position is 4-6 secs, evenly divided between main swing speed and latch swing speed. Use socket key (furnished) to adjust speed. To slow main speed of door, turn regulating screw nearest shaft clockwise. To slow latch speed, turn regulating screw nearest latch clockwise.

BACK CHECK

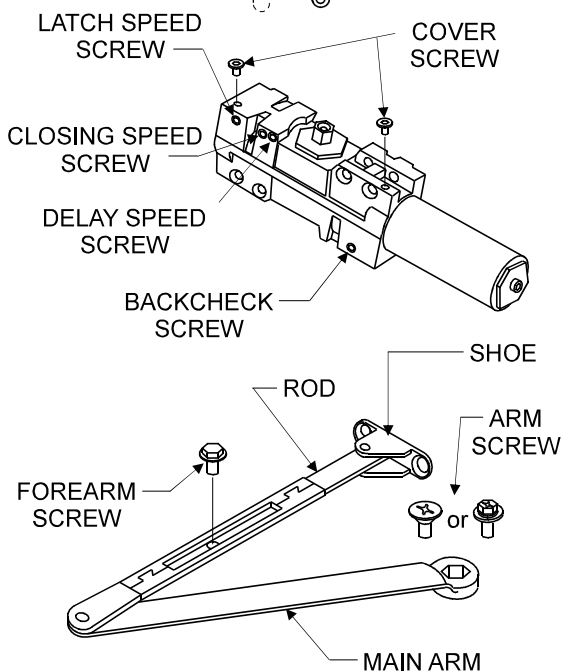
To increase back-check force, turn regulating screw nearest hinge clockwise. DO NOT USE ABRUPT BACKCHECK OR EXPECT DOOR CLOSER TO ACT AS A DOOR STOP.

COVER

Place insert in proper cutout, then push cover against door. Tighten both cover screw securely.

HOLD OPEN ADJUSTMENT (when hold open arm is used)

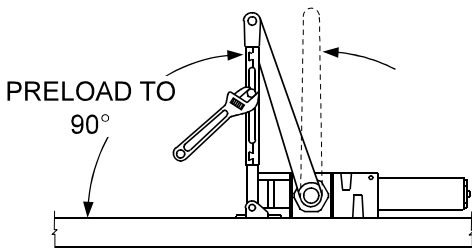
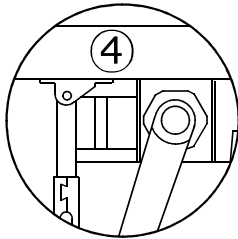
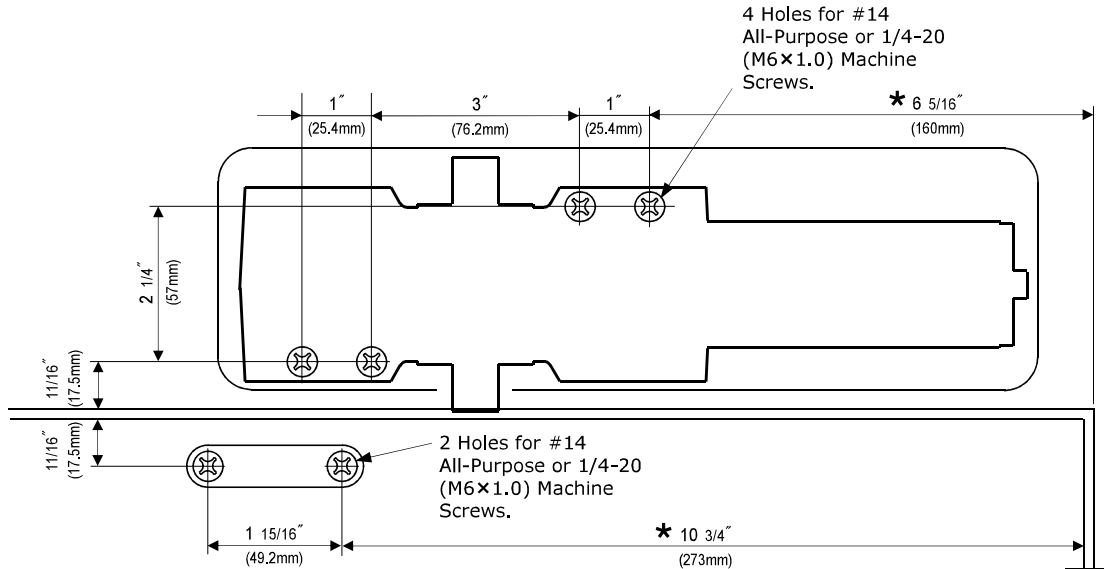
Loose adjusting nut, open door to desired hold open position and tighten nut. Do not permit door to swing beyond hold open setting.



TOP JAMB INSTALLATION CLOSER MOUNTED TOP JAMB ON PUSH SIDE OF DOOR

DOOR OPENING: 120°

This drawing shown is RIGHT HAND DOOR. For LEFT HAND DOOR should be install in symmetry.



1. Adjust spring power to match door width as indicated by chart on page 1.
2. Mount closer on frame as dimensions shown. Tube end toward hinge. If pivots are used, locate closer and shoe from CENTERLINE OF PIVOT. (For offset pivots, pls increase the marked dimensions by 1/8")
3. Place main arm on top of shaft, 100° to closer body, insert arm screw into top of shaft and tighten.
4. Attach shoe to frame as shown. (If more latching power is required, shoe 180°)
5. Open door and insert rod in forearm.
6. With forearm at left angle to door (90°), insert forearm set screw and tighten. (IF HOLD OPEN ARM IS USED, THE NUT IS ON THE TOP FOR RH DOOR AND BOTTOM FOR LH DOOR)

REGULATION:

A 'Normal' closing time from 90° open position to door stop position is 4-6 secs, evenly divided between main swing speed and latch swing speed. Use socket key (furnished) to adjust speed. To slow main speed of door, turn regulating screw nearest shaft clockwise. To slow latch speed, turn regulating screw nearest latch clockwise.

BACK CHECK

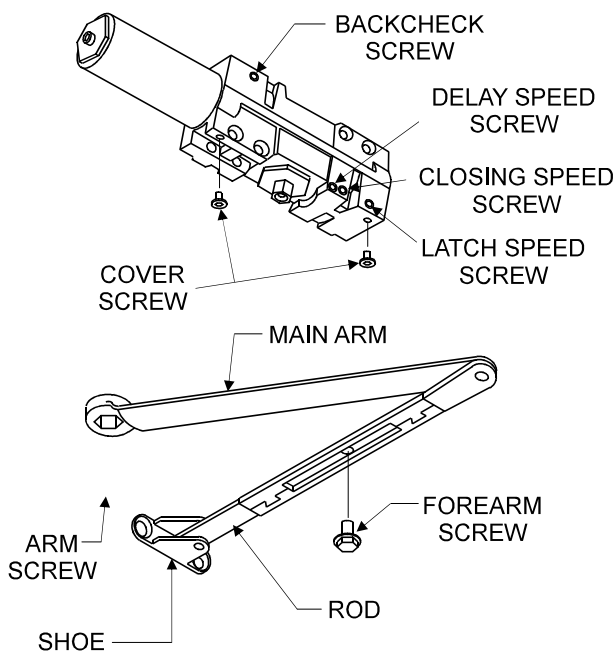
To increase back-check force, turn regulating screw nearest hinge clockwise. DO NOT USE ABRUPT BACKCHECK OR EXPECT DOOR CLOSER TO ACT AS A DOOR STOP.

COVER

Place insert in proper cutout, then push cover against door. Tighten both cover screw securely.

HOLD OPEN ADJUSTMENT (when hold open arm is used)

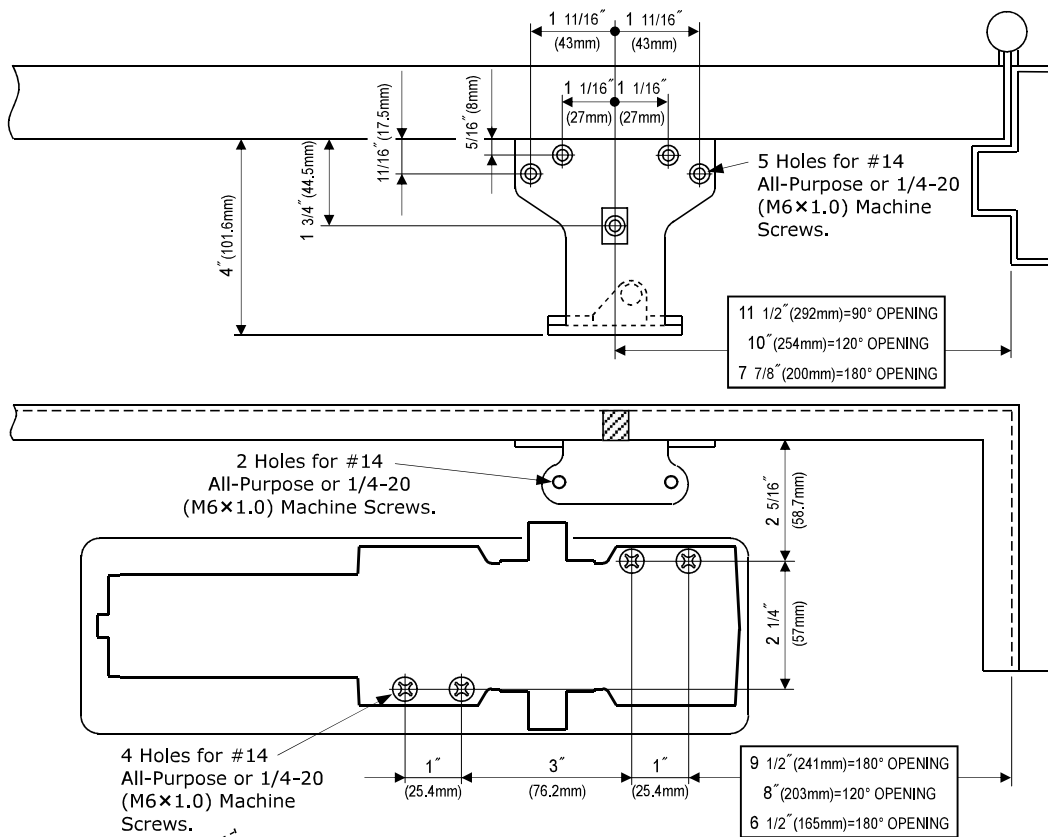
Loose adjusting nut, open door to desired hold open position and tighten nut. Do not permit door to swing beyond hold open setting.



PARALLEL ARM INSTALLATION CLOSER MOUNTED ON DOOR ON PUSH SIDE

DOOR OPENING: 180°

This drawing shown is RIGHT HAND DOOR. For LEFT HAND DOOR should be install in symmetry.



1. Before installation, turn Back Check selector valve (found on the opposite side of closer form back check screw side) ALL THE WAY IN (CLOCKWISE).
2. Adjust spring power to match door width as indicated by chart on page1.
3. Mount closer on door as dimensions shown. Tube end toward latch. If pivots are used, locate closer and parallel bracket from CENTERLINE OF PIVOT.
4. Place open end wrench on bottom shaft and turn toward hinge jamb about 30°. and then place main arm on top shaft, insert arm screw into top of shaft and tighten.
5. Attach parallel bracket on frame as dimensions shown.
5. Attach rod and shoe to parallel bracket as shown.
6. Insert rod in forearm, and then insert main arm to closer parallel to door. Then insert forearm set screw and tighten.
(IF HOLD OPEN ARM IS USED, THE NUT IS ON THE TOP FOR RH DOOR AND BOTTOM FOR LH DOOR)

REGULATION:

A 'Normal' closing time from 90° open position to door stop position is 4-6 secs, evenly divided between main swing speed and latch swing speed. Use socket key (furnished) to adjust speed. To slow main speed of door, turn regulating screw nearest shaft clockwise. To slow latch speed, turn regulating screw nearest hinge clockwise.

BACK CHECK

To increase back-check force, turn regulating screw nearest latch clockwise. DO NOT USE ABRUPT BACKCHECK OR EXPECT DOOR CLOSER TO ACT AS A DOOR STOP.

COVER

Place insert in proper cutout, then push cover against door. Tighten both cover screw securely.

HOLD OPEN ADJUSTMENT (when hold open arm is used)

Loose adjusting nut, open door to desired hold open position and tighten nut. Do not permit door to swing beyond hold open setting.

